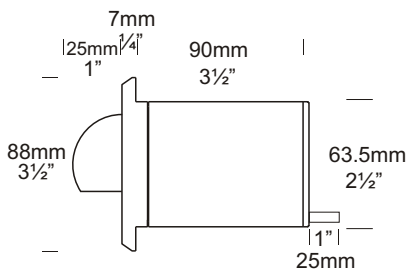
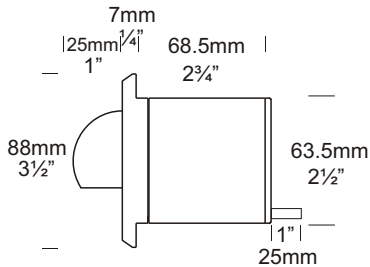


Step Lite Solid Eyelid Square

Cat. No. SLSSQ
Cat. No. SLSSQGU



GU10 Option

The Square Solid Eyelid Step Lite has an 88mm x 88mm (3 1/2" x 3 1/2") flange. It has a smooth machine finish without mounting holes to disrupt the elegant line of the fitting and is designed to fit into a mounting canister. The eyelid masks two thirds of the lamp which eliminates all upward light.

A GU10 version of this luminaire is also available for line voltage lamps. However, a longer luminaire body is needed to accommodate the longer lamp.

Ordering Information

Luminaire Type	Material/Finish	Accessories
SLSSQ - Step Lite Solid Eyelid Square	BK - Black	CJK150 - Cable Joint Kit
	BZ - Bronze	LENSSTEPF - Frosted Lens
	GN - Green	HCL - Hex Cell Louvre Adaptor
	STAR - Silver Star	Canss - 316 Stainless Steel Canister
	WH - White	Sican - Step Lite Canister
	WB - Birch	GU - GU10 Option
	DG - Dark Grey	
	OG - Olive Green	
	RG - Beige	
	PR - Primrose	
COP - Copper		
SS - 316 Stainless Steel		

Ordering Example: SLSSQ COP - Step Lite Solid Eyelid Square in Copper

SLSSQGU BK - Step Lite Solid Eyelid Square GU10 in Black

HCL COP - Hex Cell Louvre Adaptor in Copper
(Accessories ordered separately)



Luminaire Construction

CNC machined from one of the following metals:

High corrosion resistant 63.5mm (2½") x 10mm (25/64") aluminium.
End cap - solid aluminium 63.5mm (2½") rod, flange 90mm x 90mm (3½" x 3½") solid aluminium bar with chromate substrate and high UV resistant polyester powder coat

Colours Black, Bronze, Green, Silver Star, White, Birch, Dark Green, Olive Green, Beige, Primrose.

Copper: 63.5mm (2½") x 10mm (13/32"). End cap - solid copper 63.5mm (2½") rod.

Flange 90mm x 90mm (3½" x 3½") solid copper bar.

316 Stainless steel: 9mm (11/32"). End cap - solid 316 stainless steel 63.5mm (2½") rod.

Flange 90mm x 90mm (3½" x 3½") solid 316 stainless steel bar.

Mounting

Designed to fit through a 66mm (2 5/8") hole and be fixed into position by two screws in the flange or a Step Lite canister (see accessories) can be used which maintains the aesthetic look of the flange by eliminating the two screw holes in the flange.

Features

Lens:
3mm (1/8") thick clear tempered shatter resistant glass.

Lifetime Warranty.

Gaskets:
Silicone, iron impregnated 220°C (428°F).

Lamp Holders:
GU5.3 & GU10 - 350°C (662°F) ceramic multi contact lamp holder with 250°C (480°F) teflon cables.

Accessories:

Cable Joint Kit (Cat. CJK150)
Not approved for USA/Canada.

Frosted Lens (Cat. LENSSTEPF).
Hex Cell Louvre Adaptor (Cat. HCL).
Step Canister (Cat. Sican).

316 Stainless Canister for use in lime stone etc. (Cat. Canss).
GU10 Option (Cat. GU).

Standards

EN60598

IP66/IP68



UL1838

Luminaire Weight

12 volt

Alum .465kg (1lb)
Cop 1.340kg (2lb 15oz)
SS 1.055kg (2lb 5oz)

Power Supply

HUNZA™ Inground or Wall Mount

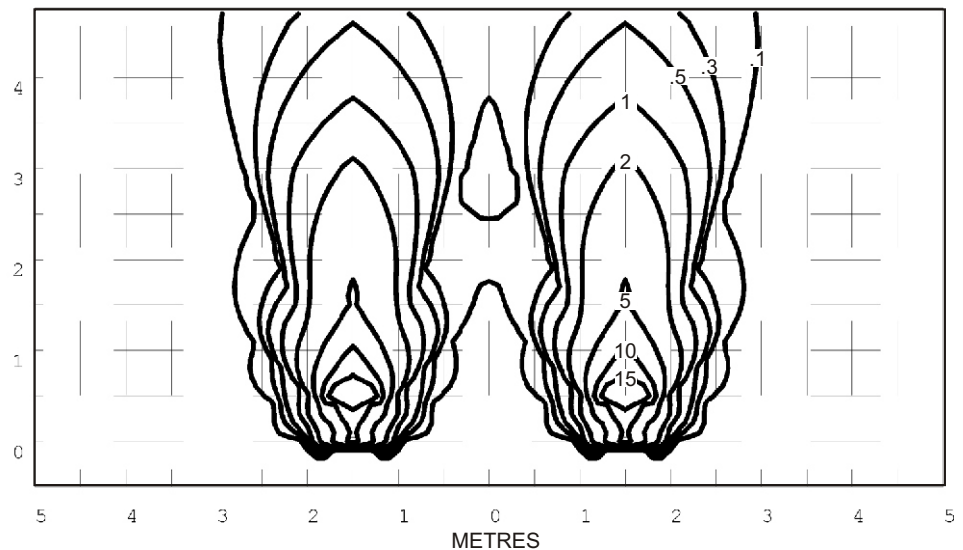
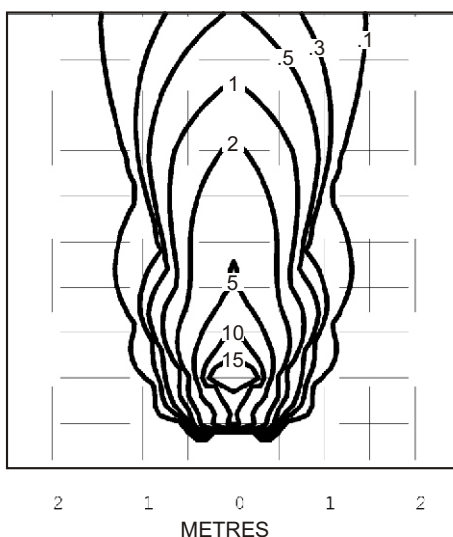
Transformer: not included.

USA and Canada:
HUNZA™ Wall Mount Transformer:
not included.

Luminaire: supplied with
Halogen
MR16 GU5.3 20 watt lamp max.
lamp.
GU10 - GU10 25 or 35 watt lamp
max.

USA and Canada:
MR16 GU5.3 20 watt lamp max.
GU10 Halogen - Lamp not supplied

Step Lite Solid Eyelid Square MR16 BAB 20 watt lamp - Lens height 400mm (15¾")



Isolux Lumens Plot - Footcandles = Isolux figures divided by 10.76

HUNZA™ PURE
OUTDOOR
LIGHTING

HUNZA FACTORY
130 Felton Mathew Ave
Glen Innes
Auckland 1072
New Zealand

Ph: 64-9-528 9471
Fax: 64-9-528 9361
hunza@hunza.co.nz
www.hunza.co.nz

INTERNATIONAL CONTACTS:
www.hunza.co.nz/contacts.php

Specifications may change without notice.
Manufactured in New Zealand.
© 2011 Hunza Holdings Ltd.